

BOBCAT COMPANY PRICE PAGES

NA LOADERS – MINI TRACK



Please note the following when using Bobcat Price Pages:

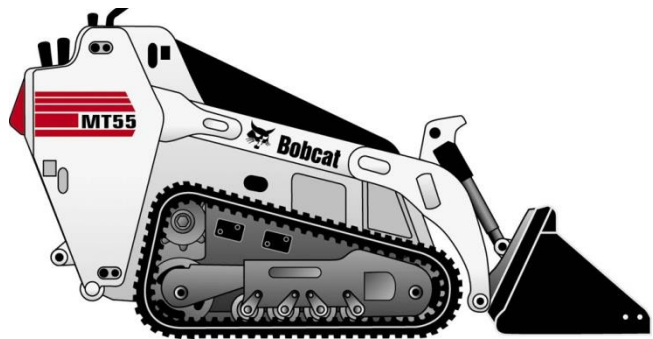
- All prices are shown in U.S. dollars.
- Check BobcatNET Pricing Homepage for current Canadian exchange rate.
- To ensure having the correct Part Number for a Dealer Installed Accessory, obtain the loader model and serial number and check with Dealer Parts Department.
- For current Dealer Installed Accessories pricing, reference BobQuote or Dealer Parts Department.
- Prices and specifications are subject to change without notice.

THE FOLLOWING UPDATES HAVE BEEN MADE TO THIS DOCUMENT:

Date	Description of Change
3/14/2016	Effective Monday, March 14, 2016 Bobcat Company has model accessories.
10/25/2015	Effective Friday, September 25, 2015 Bobcat Company has added MT85 power unit, model options, and model accessories.
01/01/2015	Effective Thursday, January 1st, 2015 Bobcat Company has adjusted the SLP of select options and power units.
10/1/2017	Effective Monday, Oct 2, 2017 Bobcat Company has adjusted the SLP of select options and power units.
05/01/2018	Effective Tuesday, May 1, 2018 Bobcat Company has adjusted the SLP of select options and power units.
01/01/2019	Updated SLPs for January 1 st 2019

**Specification(s) are based on engineering calculations and are not actual measurements. Specification(s) are provided for comparison purposes only and are subject to change without notice. Specification(s) for your individual Bobcat equipment will vary based on normal variations in design, manufacturing, operating conditions, and other factors.*

MT55 (Tier 4) BOBCAT MINI TRACK LOADER



STANDARD EQUIPMENT

- 24.8 HP Tier 4 Diesel Engine
- Auxiliary Hydraulics
- Attachment interface; Bob-Tach or CII *Common Industry Interface*
- Built-in Tie Down and Crane/Lift locations
- Continuous Flow Shutoff Lever
- Hydrostatic Drive Train
- Hourmeter, Engine Temperature and Fuel Gauges, Voltmeter & Warning Lights
- Lift Arm Lockout with Manual Bypass
- Lift Arm Support
- Tilt Lockout
- Liquid-Cooled Diesel Engine
- Neutral Start Interlocks
- Parking Brake
- Reverse Travel Stop Panel
- Spark Arrestor Muffler
- Tilt Steering
- Tracked Traction System: Rubber, 7 in. wide
- Warranty: 12 Months, Unlimited Hours

QUICK SPECS

Rated Operating Capacity.....	550 lbs.
Engine Model –Tier 4.....	D902-E4B
Engine Fuel/Cooling.....	Diesel/Liquid
Horsepower.....	24.8 HP
Auxiliary Hydraulics Flow	12 GPM
Auxiliary PSI.....	2900 PSI
Travel Speed.....	3.5 MPH
Operating Weight	2,610 lbs.
Shipping Weight.....	2,395 lbs.
Width (without bucket).....	35.6 in.
Length (with bucket)	93.1 in.
Ground Contact Length	34.0 in.
Reach @ Maximum Height	18.2 in.
Height to Hinge Pin	71.3 in.

MT55 (Tier 4)

BOBCAT MINI TRACK LOADER

PART NUMBER	DESCRIPTION	SLP IN US \$
-------------	-------------	--------------

M0045	MT55 MINI TRACK LOADER (EQUIPPED WITH T4 ENGINE).....	\$23,022
--------------	--	-----------------

FACTORY INSTALLED OPTIONS		
PART NUMBER	DESCRIPTION	SLP IN US \$

M0045-R09-C02	9.8" WIDE TRACK OPTION..... Machine width is 41.4"	\$691
----------------------	--	--------------

DEALER INSTALLED ACCESSORIES – ORDER FROM SALES		
PART NUMBER	DESCRIPTION	SLP IN US \$

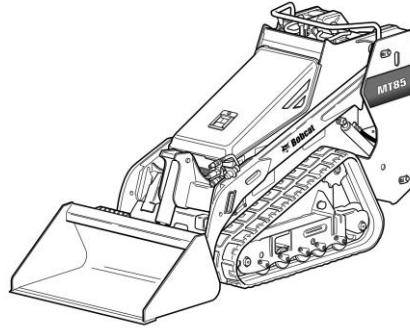
6737684	RIDE-ON PLATFORM Est. Install Time: 0.5 hr.	\$536
7286202	BOBTACH INTERFACE KIT Est. Install Time: 0.5 hr.	\$641
7286203	COMMON INDUSTRY INTERFACE KIT (CII)..... Est. Install Time: 0.5 hr.	\$641

DEALER INSTALLED ACCESSORIES – ORDER FROM PARTS		
PART NUMBER	DESCRIPTION	

Part numbers for kits in this section are current as of Mar. 2016 and pertain to current loader models as of that date. To ensure having the correct Part Number for a Dealer Installed Accessory, obtain the model and serial number and check with Dealer Parts Department. For the most current Dealer Installed Accessories pricing, refer to BobQuote or Dealer Parts Department.

6732656	ATTACHMENT CONTROL KIT..... Required for snowblower/stump grinder Est. Install time: 1.0 hrs.	\$ _____
7126035	CASE DRAIN KIT Est. Install Time: 1.5 hr.	\$ _____
6693928	CATALYTIC EXHAUST PURIFIER..... Est. Install Time: 1 hr.	\$ _____
7124264	ENGINE BLOCK HEATER Est. Install Time: 1 hr.	\$ _____
7281909	LIGHT KIT Est. Install Time: 2 hrs.	\$ _____
7101695	SHUTDOWN KIT..... Monitors hydraulic and engine oil temperatures. Est. Install Time: 2 hrs.	\$ _____
7153411	Aux Hydraulics Mode Switch Kit Needed to control M06 Backhoe attachment on MT55 s/n A3WT11001 & above Est. Install Time: .5 hrs.	\$ _____
6901742	BOBCAT MINI LOADER SAFETY VIDEO	\$ _____
6904762	BOBCAT OPERATOR SAFETY DVD Includes both English and Spanish versions on one DVD	\$ _____

MT85 (Tier 4) BOBCAT MINI TRACK LOADER



STANDARD EQUIPMENT

- 24.8 HP Tier 4 Diesel Engine
- Auxiliary Hydraulics
- Attachment interface; Bob-Tach or CII *Common Industry Interface*
- Built-in Tie Down and Crane/Lift locations
- Continuous Flow Shutoff Pedal
- Hydrostatic Drive Train
- Hourmeter, Engine Temperature and Fuel Gauges, Voltmeter & Warning Lights
- Lift Arm Lockout with Manual Bypass
- Tilt Lockout
- Lift Arm Support
- Liquid-Cooled Diesel Engine
- Neutral Start Interlocks
- Parking Brake
- Storage Cubby
- Cup Colder
- Spark Arrestor Muffler
- ISO Pattern Joystick Travel Controls
- Tracked Traction System: Rubber, 7 in. wide
- Warranty: 12 Months, Unlimited Hours

QUICK SPECS

Rated Operating Capacity.....	850 lbs.
Engine Model –Tier 4.....	D902-E4B
Engine Fuel/Cooling.....	Diesel/Liquid
Horsepower.....	24.8 HP
Auxiliary Hydraulics Flow.....	12 GPM
Auxiliary PSI.....	2900 PSI
Travel Speed Fwd.....	4.1 MPH
Travel Speed Rev.....	2.9 MPH
Operating Weight.....	3,103 lbs.
Shipping Weight.....	2,745 lbs.
Width (without bucket).....	35.6 in.
Length (with bucket).....	106.2 in.
Ground Contact Length.....	40.6 in.
Reach @ Maximum Height.....	18.7 in.
Height to Hinge Pin.....	81.0 in.

MT85 (Tier 4)

BOBCAT MINI TRACK LOADER

PART NUMBER	DESCRIPTION	SLP IN US \$
-------------	-------------	--------------

M0113	MT85 MINI TRACK LOADER (EQUIPPED WITH T4 ENGINE).....	\$27,327
--------------	---	----------

FACTORY INSTALLED OPTIONS		
PART NUMBER	DESCRIPTION	SLP IN US \$

M0113-R09-C02	9.8" WIDE TRACK OPTION Machine width is 41.4" Est. Install Time: 0.5 hr.	\$967
----------------------	---	-------

DEALER INSTALLED ACCESSORIES – ORDER FROM SALES		
PART NUMBER	DESCRIPTION	SLP IN US \$

7286202	BOB-TACH INTERFACE KIT Est. Install Time: 0.5 hr.	\$641
----------------	---	-------

7286203	COMMON INDUSTRY INTERFACE KIT (CII) Est. Install Time: 0.5 hr.	\$641
----------------	--	-------

DEALER INSTALLED ACCESSORIES – ORDER FROM PARTS		
PART NUMBER	DESCRIPTION	

Part numbers for kits in this section are current as of Mar. 2016 and pertain to current loader models as of that date. To ensure having the correct Part Number for a Dealer Installed Accessory, obtain the model and serial number and check with Dealer Parts Department. For the most current Dealer Installed Accessories pricing, refer to BobQuote or Dealer Parts Department.

7275444	ATTACHMENT CONTROL KIT Required for snowblower/stump grinder Est. Install time: 1.0 hrs.	\$ _____
7279903	CASE DRAIN KIT Est. Install Time: 1.5 hr.	\$ _____
6693928	CATALYTIC EXHAUST PURIFIER Est. Install Time: 1 hr.	\$ _____
7124264	ENGINE BLOCK HEATER Est. Install Time: 1 hr.	\$ _____
7281909	LIGHT KIT Est. Install Time: 2 hrs.	\$ _____
7101695	SHUTDOWN KIT Monitors hydraulic and engine oil temperatures. Est. Install Time: 2 hrs.	\$ _____
6901742	BOBCAT MINI LOADER SAFETY VIDEO	\$ _____
6904762	BOBCAT OPERATOR SAFETY DVD Includes both English and Spanish versions on one DVD.	\$ _____